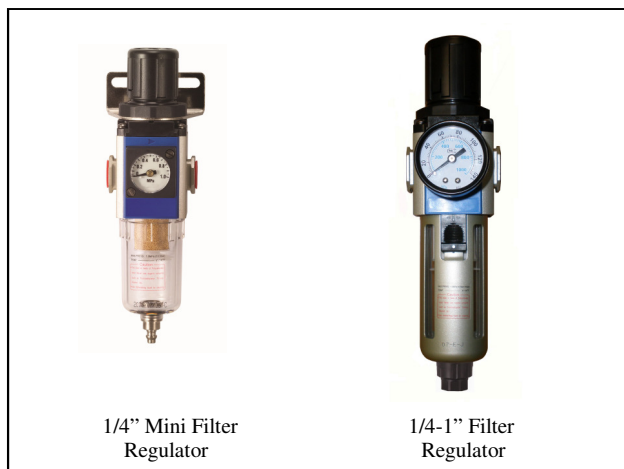


All products come in Clam Shell Packaging for easy display except the 600 Series

FILTER REGULATOR



PART No	DESCRIPTION
28GFR200-04	200 Series 1/4 BSP Mini Filter Reg.
28GFR300-04	300 Series 1/4 BSP Filter Regulator
28GFR300-06	300 Series 3/8 BSP Filter Regulator
28GFR300-08	300 Series 1/2 BSP Filter Regulator
28GFR400-08	400 Series 1/2 BSP Filter Regulator
28GFR600-12	600 Series 3/4 BSP Filter Regulator
28GFR600-16	600 Series 1" BSP Filter Regulator

Standard filter is 5μ.

All Filter Regulators come with a bracket and gauge.

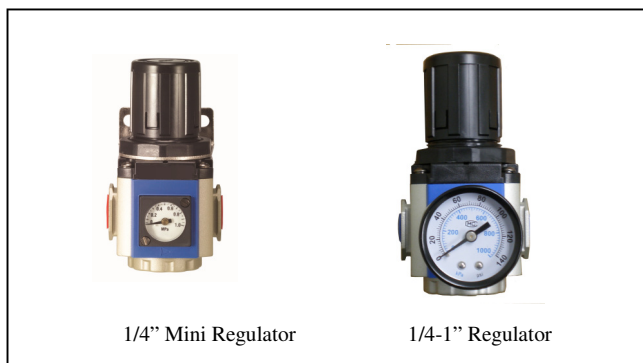
Semi Auto drain automatically drains when system is depressurised - can also be manually drained



Buy 5 or more of the 1/4" 300 Series Filter Regulators and the list price is reduced by 15%

PART No: 28GFR300-04

REGULATOR



PART No	DESCRIPTION
28GR200-04	200 Series 1/4 BSP Mini Reg.
28GR300-04	300 Series 1/4 BSP Regulator
28GR300-06	300 Series 3/8 BSP Regulator
28GR300-08	300 Series 1/2 BSP Regulator
28GR400-08	400 Series 1/2 BSP Regulator
28GR600-12	600 Series 3/4 BSP Regulator
28GR600-16	600 Series 1" BSP Regulator

All Regulators come with a bracket and gauge.

FILTER



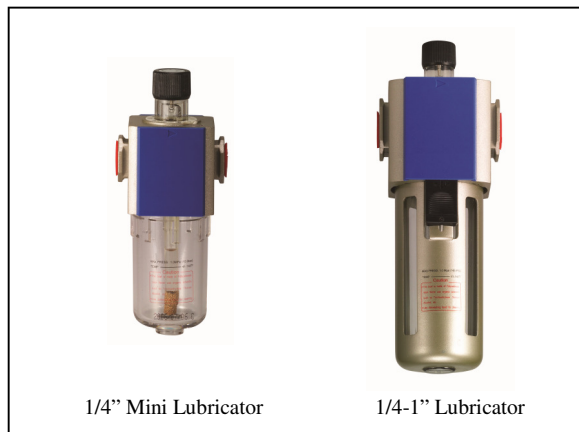
PART No	DESCRIPTION
28GF200-04	200 Series 1/4 BSP Mini Filter
28GF300-04	300 Series 1/4 BSP Filter
28GF300-06	300 Series 3/8 BSP Filter
28GF300-08	300 Series 1/2 BSP Filter
28GF400-08	400 Series 1/2 BSP Filter
28GF600-12	600 Series 3/4 BSP Filter
28GF600-16	600 Series 1" BSP Filter

Standard filter is 5μ.

All Filters come with a bracket.

Semi Auto drain automatically drains when system is depressurised - can also be manually drained

LUBRICATOR

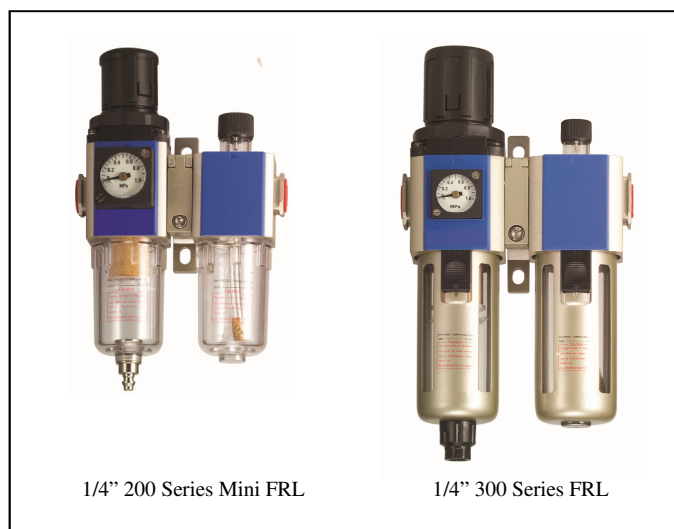


PART No	DESCRIPTION
28GL200-04	200 Series 1/4 BSP Mini Lub.
28GL300-04	300 Series 1/4 BSP Lubricator
28GL300-06	300 Series 3/8 BSP Lubricator
28GL300-08	300 Series 1/2 BSP Lubricator
28GL400-08	400 Series 1/2 BSP Lubricator
28GL600-12	600 Series 3/4 BSP Lubricator
28GL600-16	600 Series 1" BSP Lubricator

All Lubricators come with a bracket.

Lubricator can be refilled without shutting down the system.

FILTER, REGULATOR, LUBRICATOR UNITS (FRL)



PART No	DESCRIPTION
28GFRL200-04	200 Series 1/4" FRL
28GFRL300-04	300 Series 1/4" FRL

The FRL units are supplied fully assembled using a joining bracket which also doubles as a mounting point.

The filter regulator is fitted with a semi auto drain.

DROP LEG DRAIN



PART No	28GAAD-08
PORT	1/2" Inlet, Tube Outlet

Attach to your air ring system or pressure vessel to automatically drain any water from the system.

LOCKOUT VALVE

Able to shut off the air supply and purge the down stream line. Once the down stream is isolated the valve can be locked closed to prevent tampering.

The unit is supplied with a padlock and key. Allows safe maintenance on the air system



PART No	DESCRIPTION
28GZ300-04	300 Series 1/4 Port
28GZ300-08	300 Series 1/2 Port
28GZ400-08	400 Series 1/2 Port

	200 Mini Series 1/4"	300 Series 1/4, 3/8 & 1/2	400 Series 1/2"	600 Series 3/4 & 1"
Regulating Range	21 - 128psi	21 - 128psi	21 - 128psi	21 - 128psi
Max Working Pressure	145psi	145psi	145psi	145psi
Maximum Flow Rate	3000 l/min	4000 l/min	6000 l/min	12000 l/min
Working Temperature	-10°C to +60°C	-10°C to +60°C	-10°C to +60°C	-10°C to +60°C

ACCESSORIES**MANUAL DRAIN BOWLS**

Replace the semi auto drain bowl on the Filters, Filter Regs and FRLs. Requires draining manually.

PART No	DESCRIPTION
28MDB300	300 Series Manual Bowl
28MDB400	400 Series Manual Bowl
28MDB600	600 Series Manual Bowl

**FULL AUTO DRAIN BOWLS**

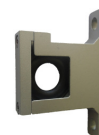
Replace the semi auto drain bowl on the Filters, Filter Regs and FRLs. Will drain automatically as required.

PART No	DESCRIPTION
28ADB300	300 Series Auto Bowl
28ADB400	400 Series Auto Bowl
28ADB600	600 Series Auto Bowl

**MOUNTING BRACKETS**

Used to join units together.
Can also incorporate a mounting bracket.

PART No	DESCRIPTION
28GA201	200 Series Mounting Bracket
28GA301	300 Series Mounting Bracket
28GA401	400 Series Mounting Bracket
28GA601	600 Series Mounting Bracket
28GA203	200 Series Joining Bracket
28GA303	300 Series Joining Bracket
28GA403	400 Series Joining Bracket
28GA603	600 Series Joining Bracket



MOUNTING BRACKET



JOINING BRACKET

SPARE BOWLS AND FILTER ELEMENTS ALSO AVAILABLE

TOOL & COMPRESSOR OILS

CATEGORY 27

NOT ALL OILS ARE THE SAME!!!

Our Tool Oil is 10 grade. Unlike most other tool oils on the market which are 30 grade (Hydraulic Oil), the Fuchs 10 grade Tool Oil has a lower viscosity and is ideally suited to air tools.

The Compressor Oil is 68 grade and is specifically designed to suit both screw and piston type compressors.

TOOL OIL 10 grade

500ml	27-TOIL-500
1 Litre	27-TOIL-1000
5 Litre	27-TOIL-5000
20 Litre	27-TOIL-20000



500ml



1 Litre

COMPRESSOR OIL 68 grade

1 Litre	27-COIL-1000
5 Litre	27-COIL-5000
20 Litre	27-COIL-20000



1 Litre



5 Litre



AMG WATER SEPARATOR



Removes up to 99% of water droplets in the air line of a compressed air system.

- Max Operating Pressure: 1000kpa
- Auto Drain
- Replacement elements available
- Mounting bracket not included

NOTE: Water separator must be placed far enough away from the compressor to allow the air to cool and the water to condensate. No filter or water separator will remove water from air while in vapour form.

MODEL	AMG 150	AMG 250	AMG 350	AMG 450	AMG 550
Flow rate l/min	300	750	1500	2200	3700
Port Size	1/4	1/4, 3/8, 1/2	3/8, 1/2, 3/4	1/2, 3/4, 1	3/4, 1



AM MIST SEPARATOR



Will remove, oil mist, water and other contaminants 0.3μ in size or larger from the air of a compressed air system.
Filtration efficiency 99.9%

- Max Operating Pressure: 1000kpa
- Auto Drain
- Replacement filter elements available
- Mounting bracket not included

MODEL	AM 150	AM 250	AM 350	AM 450	AM 550
Flow rate l/min	300	750	1500	2200	3700
Port Size	1/4	1/4, 3/8, 1/2	3/8, 1/2, 3/4	1/2, 3/4, 1	3/4, 1

**The full range of SMC products is available.
Please consult our sales staff with any enquiries**